



PRIME DOWNTOWN LOCATION

Renovations Complete

FOR LEASE | 50 S Meridian Street | Indianapolis, IN

- ± 47,000 SF Office Building – 8 floors plus Lower Level
- ± 11,000 SF available for lease
- 2-story atrium
- Exterior signage available
- Excellent transportation connectivity:
 - located on IndyGo bus line
 - numerous bike lanes
 - walking distance to new Mass Transit Center
 - quick + easy access to I-70, I-65, + I-465
- Numerous parking options in close proximity
- Nearby: Monument Circle, Circle Centre Mall, Convention Center, State Capitol and Government Center, Bankers Life Fieldhouse
- Unbeatable amenity base (lodging/dining)

CONNECTED
TO
EVERYTHING!

RICH FORSLUND

Executive Vice President

317.713.2172

rich.j.forslund@colliers.com

MATT LANGFELDT

Executive Vice President & Co-Market Leader

317.713.2173

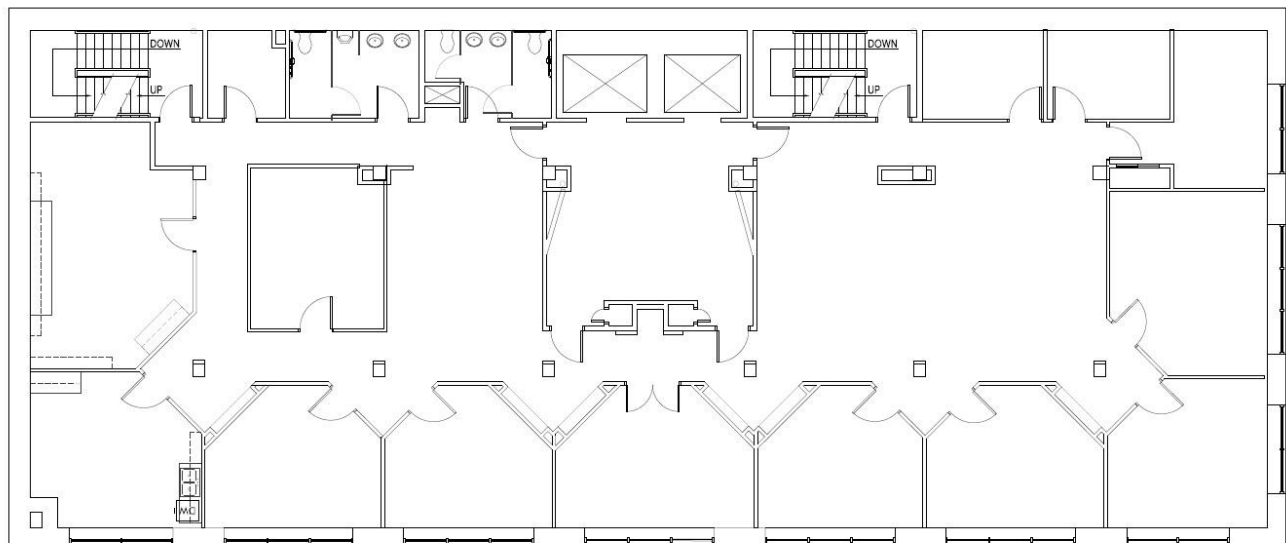
matt.langfeldt@colliers.com



colliers.com/indianapolis



Property Information + Floorplate



Typical Floorplate

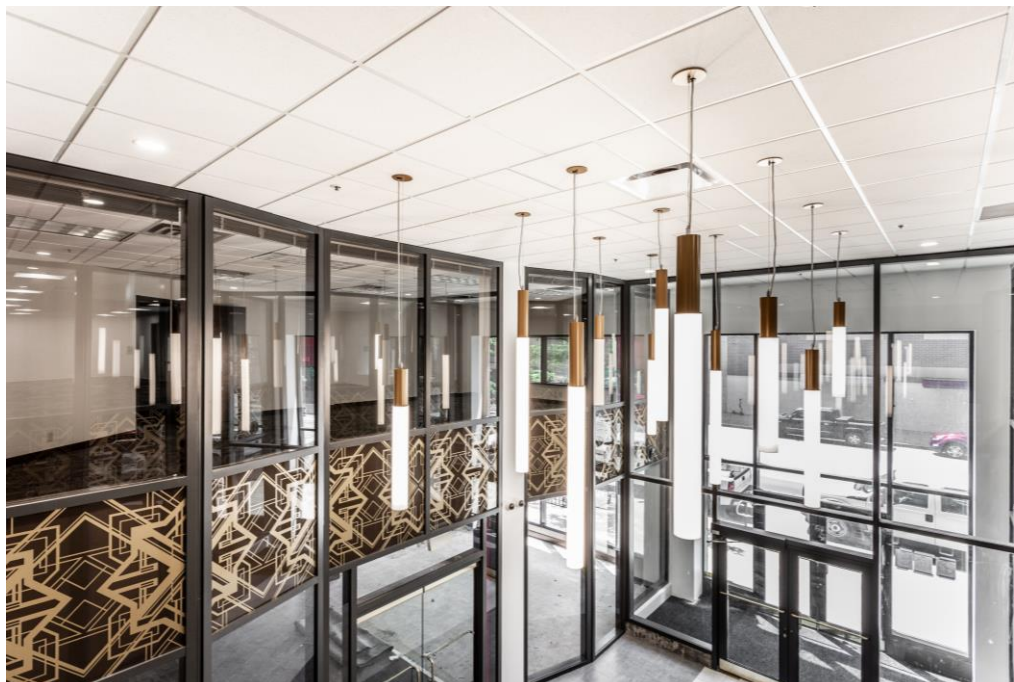
Elevators	2 passenger
Access	Fob security system with 24/7 access. Secured building with camera monitoring.
Data	High speed on-site
Year Built	1985 with extensive renovations complete
Restrooms	Central
Rental Rate	\$18.00 psf Full Service
Zoned	C3
Misc.	Janitorial / Maintenance / Recycle Program

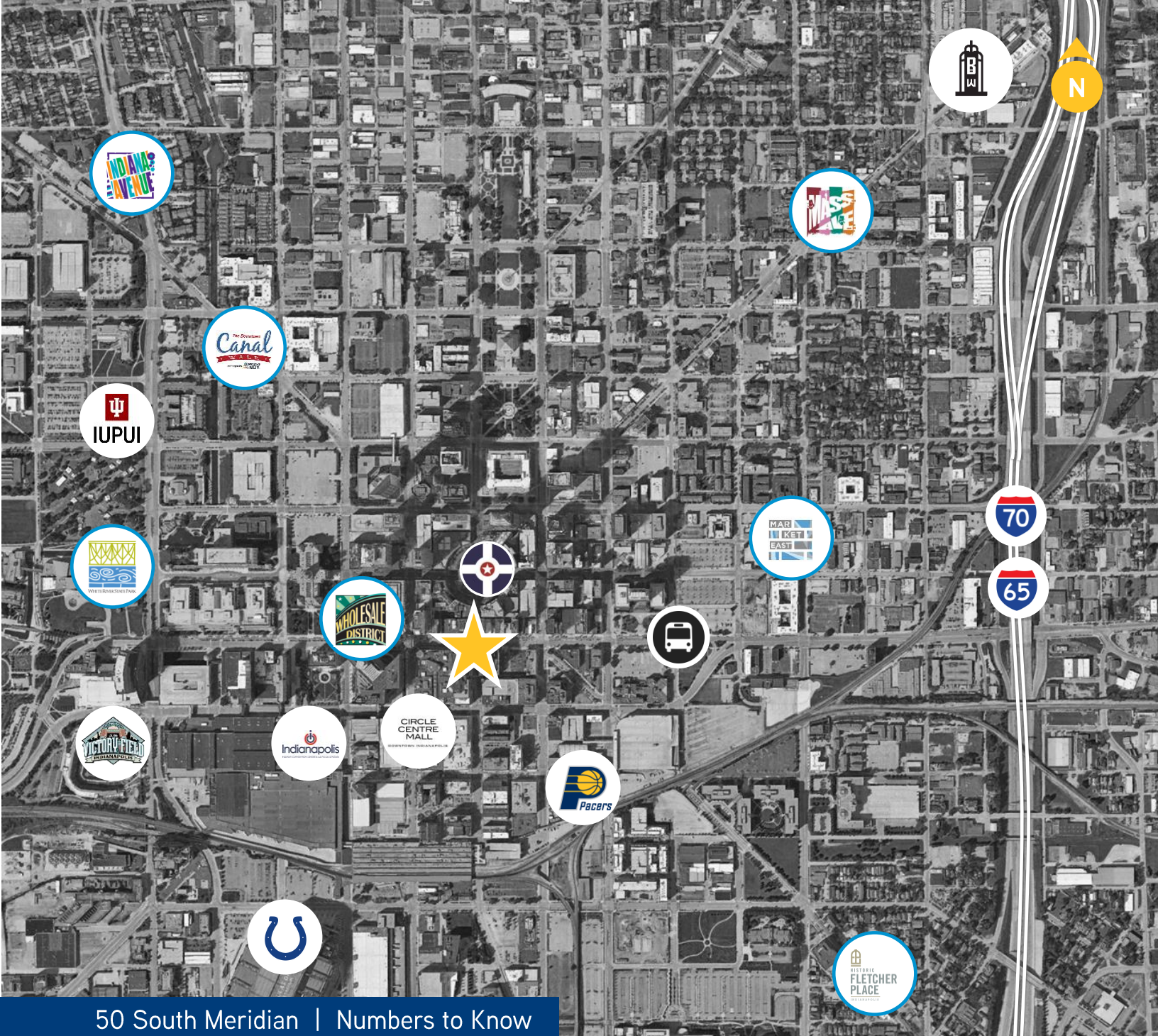
Gallery

A 2-story atrium greets you //
Architectural detail // Strong
natural light floods the atrium //
Elevator lobby with 2nd floor
overlook into the atrium



INCREDIBLE
CONNECTIVITY
TO COMMUTER
MODES +
AMENITIES!





50 South Meridian | Numbers to Know

7

Entertainment +
Sport Venues

40+

Dining
Options

5

Art + Theatre
Venues

18+

Hotels + Lodging
Options

97

Bike
Score

65

Walk
Score

95

Transit
Score

RICH FORSLUND
Executive Vice President
317.713.2172
rich.j.forslund@colliers.com

MATT LANGFELDT
Executive Vice President & Co-Market Leader
317.713.2173
matt.langfeldt@colliers.com



colliers.com/indianapolis