

100 Duffy Avenue

HICKSVILLE, NY

PROFESSIONAL OFFICE
SUITES AVAILABLE
FOR LEASE

3,979 SF

SUITE 310 | IMMEDIATE OCCUPANCY

3,862 SF

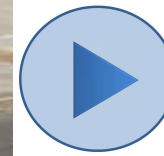
SUITE 302 | OPTION TO EXPAND TO 10,000 SF+

NYCB PLAZA

CLEARANCE 8'-4"

100 DUF

CLICK FOR



SUITE TOUR

Colliers

100 Duffy Avenue

HICKSVILLE, NY

*Inquire About
Larger Requirements
Available Soon!*

Immediate
Availability

Close to Retail,
Restaurants
and Transit

24/7
Security

6
Elevators
(1 Freight)



**Private Offices
with Bullpen
Common Area**

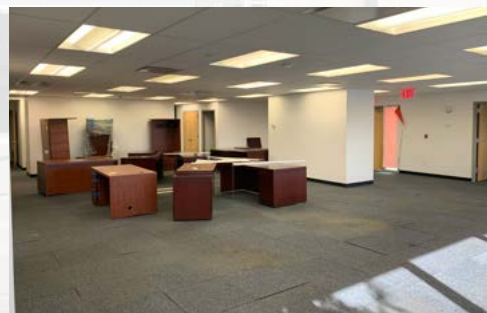
**Covered
and Secured
Parking Spaces**

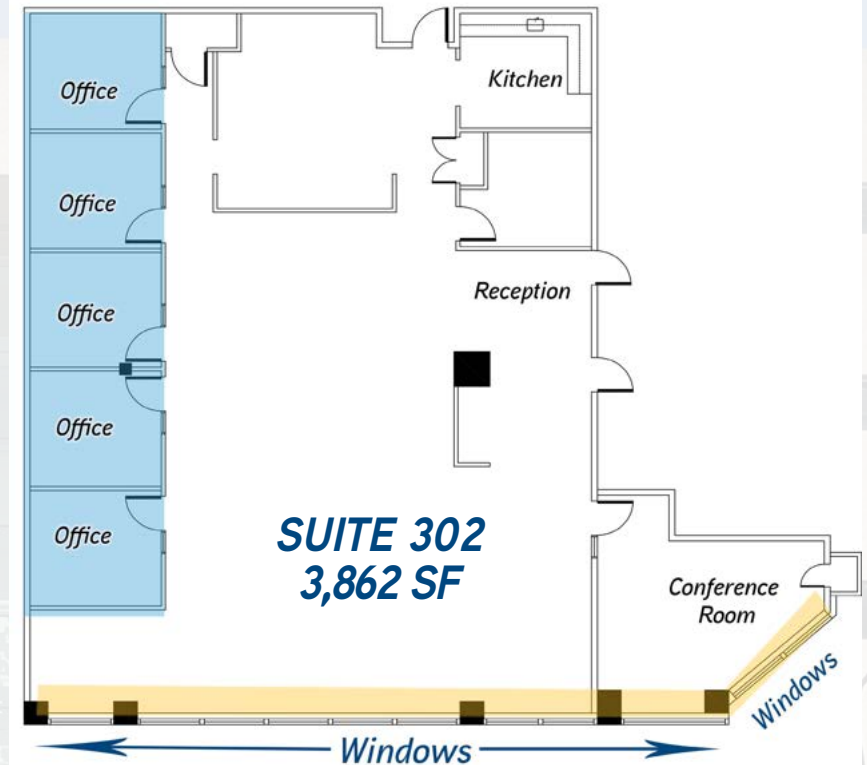
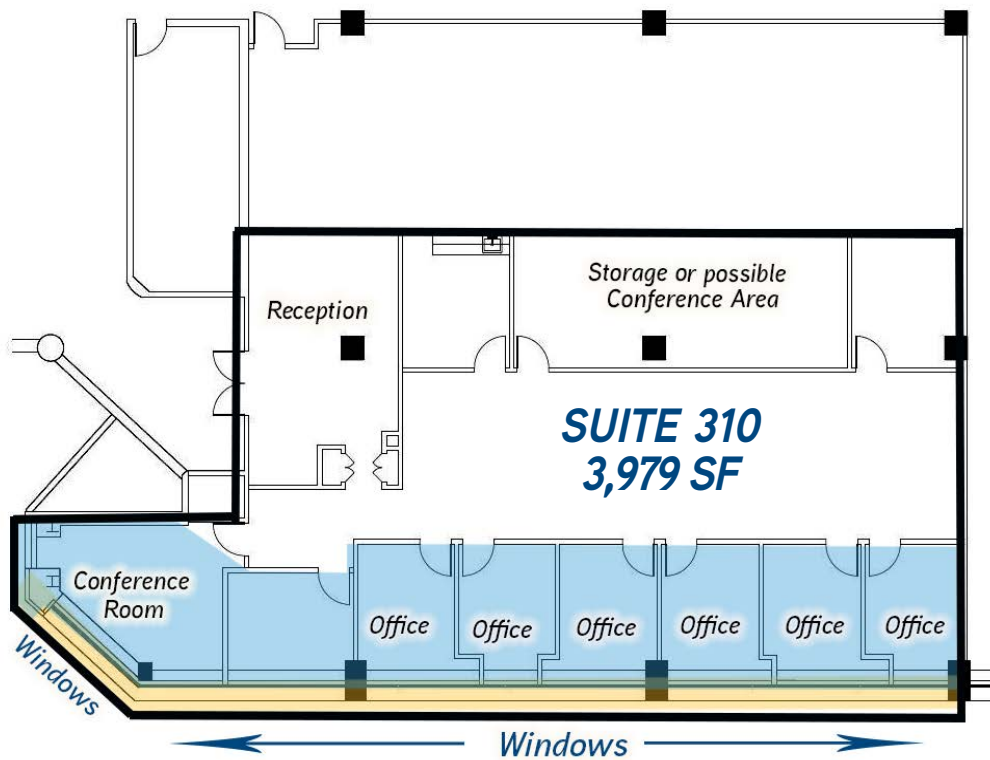
Asking Lease Price:

**UPON
REQUEST**

VIEW ONLINE >
www.colliers.com

Colliers

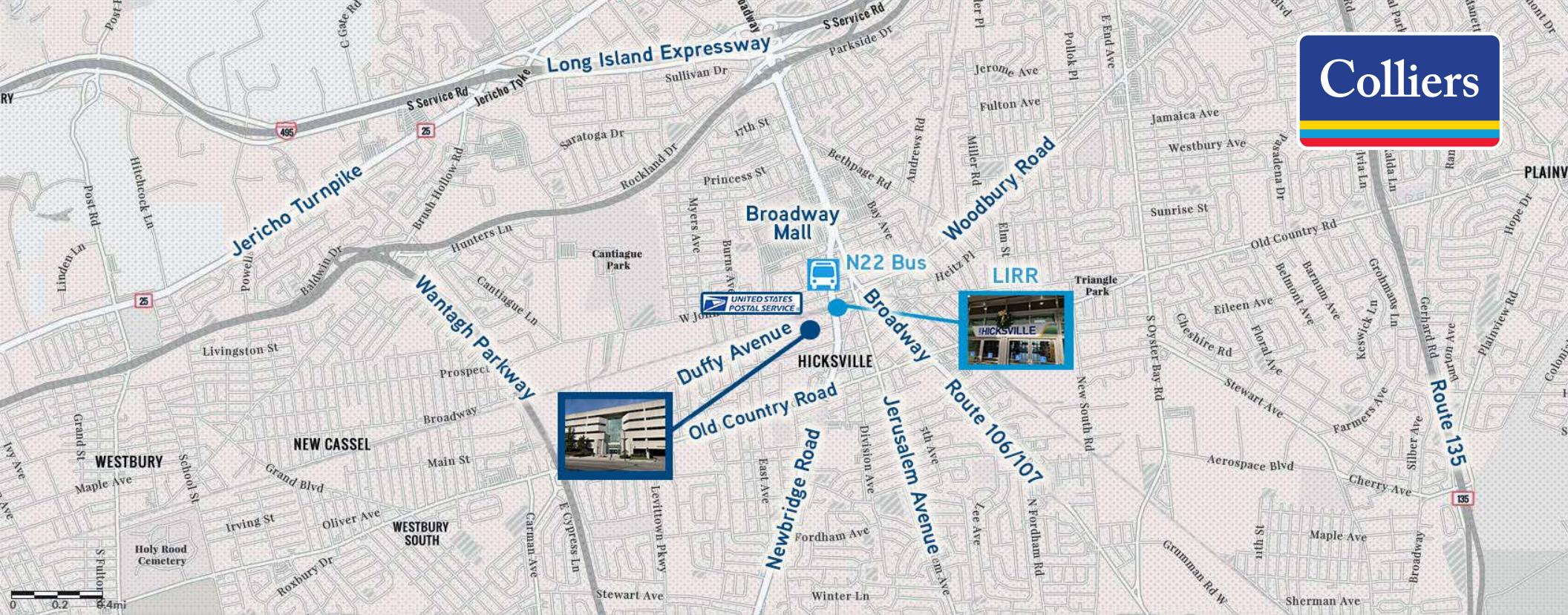




Suite 302
offers 2 entrances and exits with a reception area and open office floor plan, 5 offices, IT and clothes closets, copy room, break room, store room and conference room



Colliers



On the Long Island Railroad (Hicksville Station) train line. Minutes away from the N22 Bus Line and the Broadway Mall.

100 Duffy Avenue

Hicksville, NY

EXCLUSIVE AGENTS

GUS NUZZOLESE, Esq.
Executive Managing Director
Associate Broker
516 284 3456 | DIRECT DIAL
LONG ISLAND, NY
gus.nuzzolese@colliers.com

MATTHEW KUCKER
Director
NYS Licensed RE Salesperson
516 284 3418 | DIRECT DIAL
LONG ISLAND, NY
matthew.kucker@colliers.com

JORDAN BARUCH
Director
NYS Licensed RE Salesperson
516 284 3446 | DIRECT DIAL
LONG ISLAND, NY
jordan.baruch@colliers.com

Copyright © 2021 Colliers International.
Information herein has been obtained from sources
deemed reliable, however its accuracy cannot be guaranteed.
The user is required to conduct their own due diligence and verification.