

FOR LEASE > OFFICE SPACE

# ESPLIN WEIGHT

288 WEST CENTER STREET PROVO, UT 84601

Colliers  
INTERNATIONAL



## Property Information

- > 2nd Floor Office Space Available
- > 3,000 sq. ft.
- > Lease rate: \$12.00/SF Modified Gross
- > This office is the perfect space for people who want an impressive office for meeting with clients or just a nice office to work in
- > Offices on second floor. No elevator.
- > Call for a tour



Dan Ford  
+1 801 420 0137  
dan.ford@colliers.com

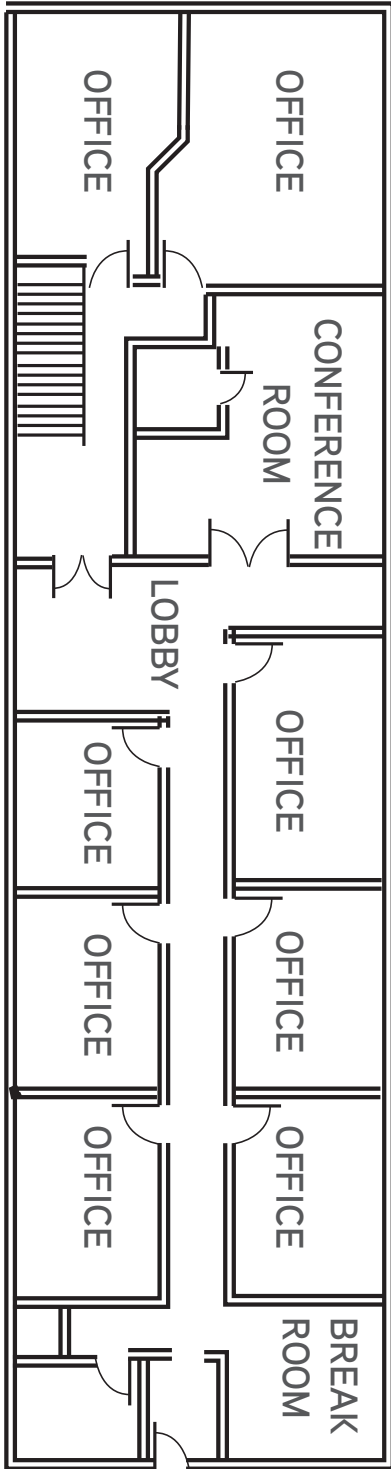
Colliers International  
2100 Pleasant Grove Blvd. | Suite 200  
Pleasant Grove, UT 84062  
P: +1 801 610 1300



FOR LEASE > OFFICE SPACE

# ESPLIN WEIGHT

288 WEST CENTER STREET PROVO, UT 84601



Dan Ford  
+1 801 420 0137  
dan.ford@colliers.com

Colliers International  
2100 Pleasant Grove Blvd. | Suite 200  
Pleasant Grove, UT 84062  
P: +1 801 610 1300



Accelerating success.

FOR LEASE > OFFICE SPACE

# ESPLIN WEIGHT

288 WEST CENTER STREET PROVO, UT 84601



Dan Ford  
+1 801 420 0137  
dan.ford@colliers.com

Colliers International  
2100 Pleasant Grove Blvd. | Suite 200  
Pleasant Grove, UT 84062  
P: +1 801 610 1300



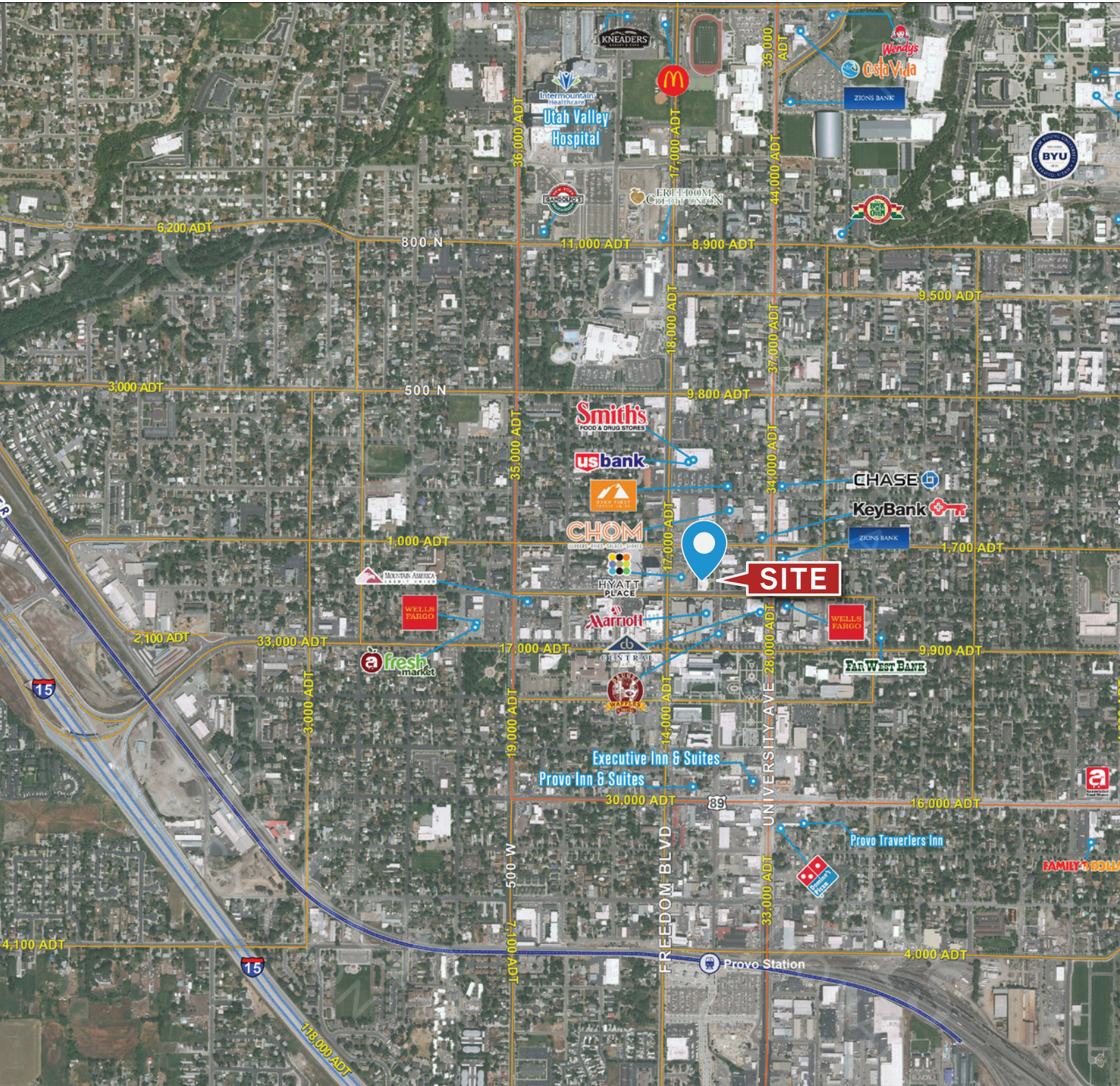
Accelerating success.



FOR LEASE > OFFICE SPACE

# ESPLIN WEIGHT

288 WEST CENTER STREET PROVO, UT 84601



This document has been prepared by Colliers International for advertising and general information only. Colliers International makes no guarantees, representations or warranties of any kind, expressed or implied, regarding the information including, but not limited to, warranties of content, accuracy and reliability. Any interested party should undertake their own inquiries as to the accuracy of the information. Colliers International excludes unequivocally all inferred or implied terms, conditions and warranties arising out of this document and excludes all liability for loss and damages arising therefrom. This publication is the copyrighted property of Colliers International and/or its licensor(s). ©2020. All rights reserved.

Colliers International  
2100 Pleasant Grove Blvd. | Suite 200  
Pleasant Grove, UT 84062  
P: +1 801 610 1300



Accelerating success.