



# FOR LEASE

OFFICE SPACES AVAILABLE • PROPERTY HIGHLIGHTS

1705 E Woodland Drive | Saline, Michigan

- 5 Spaces: 522-5,353 SF | \$15 PSF
- Beautiful Office Building in Edward F Redies Industrial Park
- Each Office Suite Has Use of a Common Kitchen and Large Conference Space
- Formal Light-Filled Entrance, Plenty of Parking, Monument Signage
- Great Local Amenities Including Saline Recreation Center, Restaurants, and Grocery Stores



**Jerry O'Connor**

734 769 5010

gerald.o'connor@colliers.com



**Jim Chaconas**

734 769 7005

jim.chaconas@colliers.com

Colliers International Ann Arbor, 1955 Pauline Blvd, Suite 400 | Ann Arbor, MI 48103  
www.ColliersAnnArbor.com





OFFICE SPACES AVAILABLE

1705 E Woodland Drive | Saline, Michigan



## PROPERTY PHOTOS





OFFICE SPACES AVAILABLE

1705 E Woodland Drive | Saline, Michigan



## SUITE 200 – 2,875 SF





OFFICE SPACES AVAILABLE

1705 E Woodland Drive | Saline, Michigan



## SUITE 201 – 2,487 SF



OFFICE SPACES AVAILABLE

1705 E Woodland Drive | Saline, Michigan



## SUITE 204 – 1,500 SF





OFFICE SPACES AVAILABLE

1705 E Woodland Drive | Saline, Michigan



## SUITE 204B – 1,749 SF



## AVAILABLE SUITES

SUITE	SIZE (SF)	RATE	DESCRIPTION
200	2,875 SF	\$15 PSF	Well maintained - move right in! Large entry space with dual entry to rear work area
201	2,487 SF	\$15 PSF	Big reception area, large conference room, 2 offices, 1 executive office. Storage, small kitchen
200-201	5,362 SF	\$15 PSF	The above two suites may be leased together
204	1,500 SF	\$15 PSF	Corner space w/ private entrance, lobby area, large open workspace, four private offices
204B	1,749 SF	\$15 PSF	Private entrance, 6 private offices, common area, use of common kitchen
206	522 SF	\$15 PSF	Great small office space w/ access to common kitchen and hallway restroom

**Jerry O'Connor**

734 769 5010

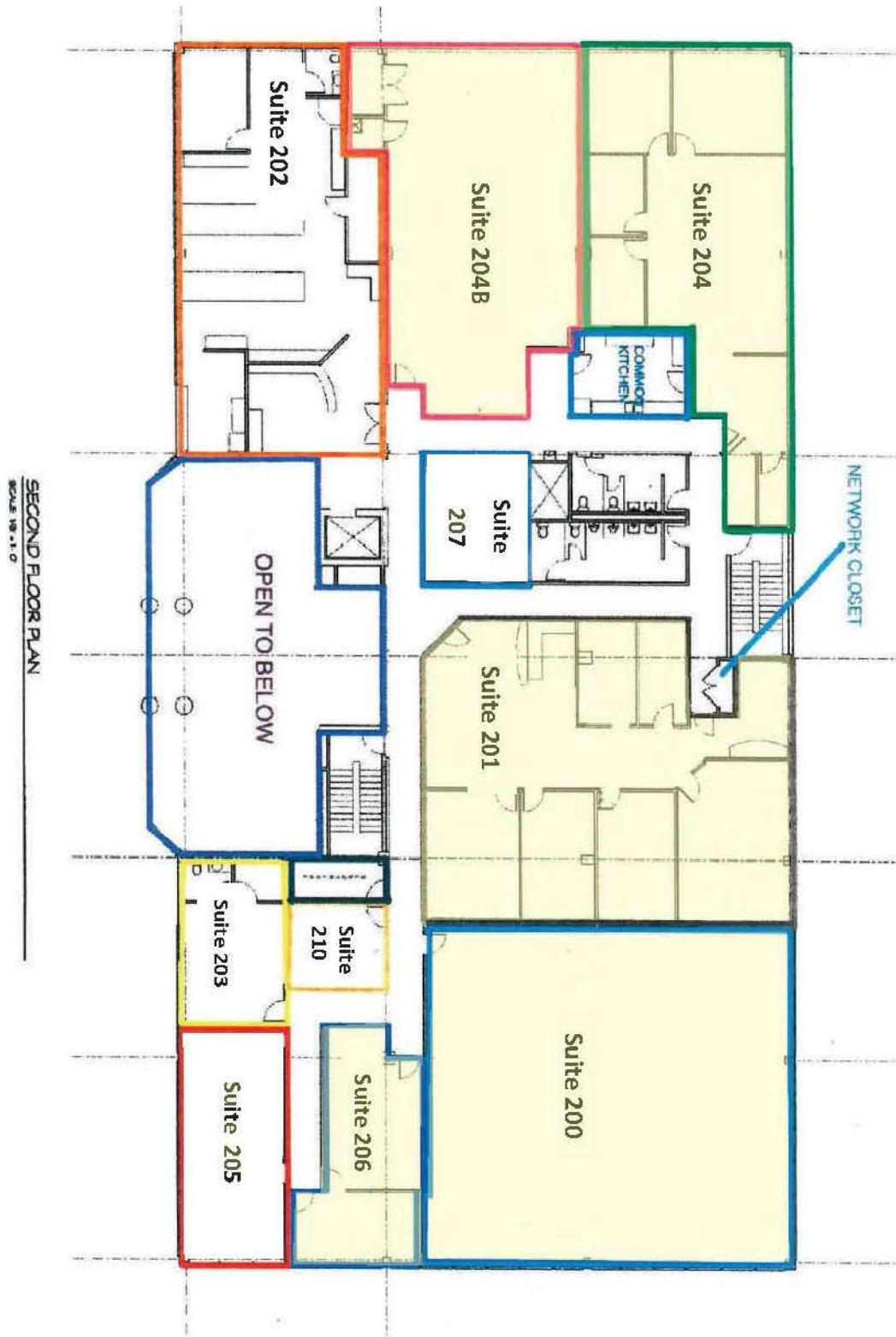
gerald.o'connor@colliers.com

**Jim Chaconas**

734 769 5005

jim.chaconas@colliers.com

## FLOOR PLAN





OFFICE SPACES AVAILABLE

1705 E Woodland Drive | Saline, Michigan



## AERIAL

