

ARAPAHOE CORPORATE PARK I

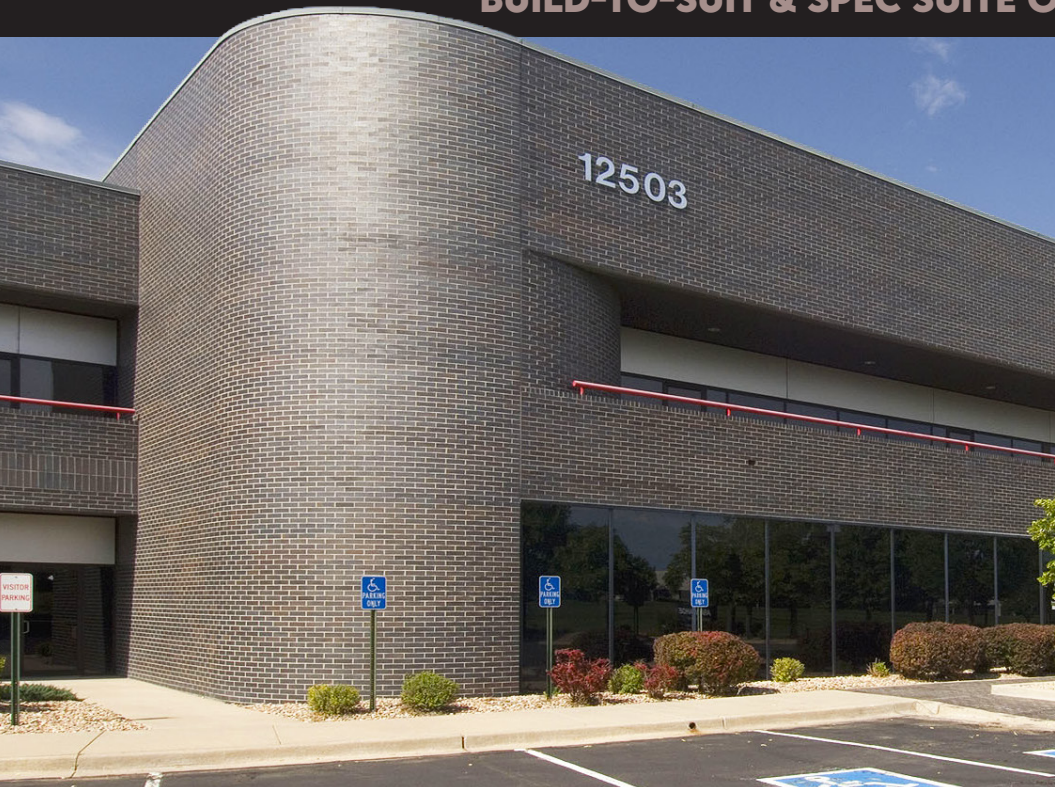
BUILD-TO-SUIT & SPEC SUITE OPTIONS



12503

E. EUCLID DRIVE
SECOND FLOOR

CENTENNIAL, CO 80111



AVAILABILITY INFORMATION

AVAILABLE:	Immediately
TYPE:	Office
SIZE:	1,661 SF - 12,736 SF (Divisible)
BASE RENT:	\$19.00/SF Full Service Gross
CEILING HEIGHT:	9'
PARKING:	4/1,000 SF Surface
BUILT:	1986

HIGHLIGHTS

- Arapahoe Corporate Park features a professional business park atmosphere, excellent location, and close to both DTC and Centennial Airport
- Serviced by RTD, Arapahoe Corporate Park also has easy highway access to both I-25 and C-470
- Fitness center with new equipment
- Abundant parking
- High ceilings
- Extensive glass line and patio space
- Walking distance to numerous nearby restaurants and retail amenities



CODY SHEESLEY
+1 303 309 3520
cody.sheesley@colliers.com

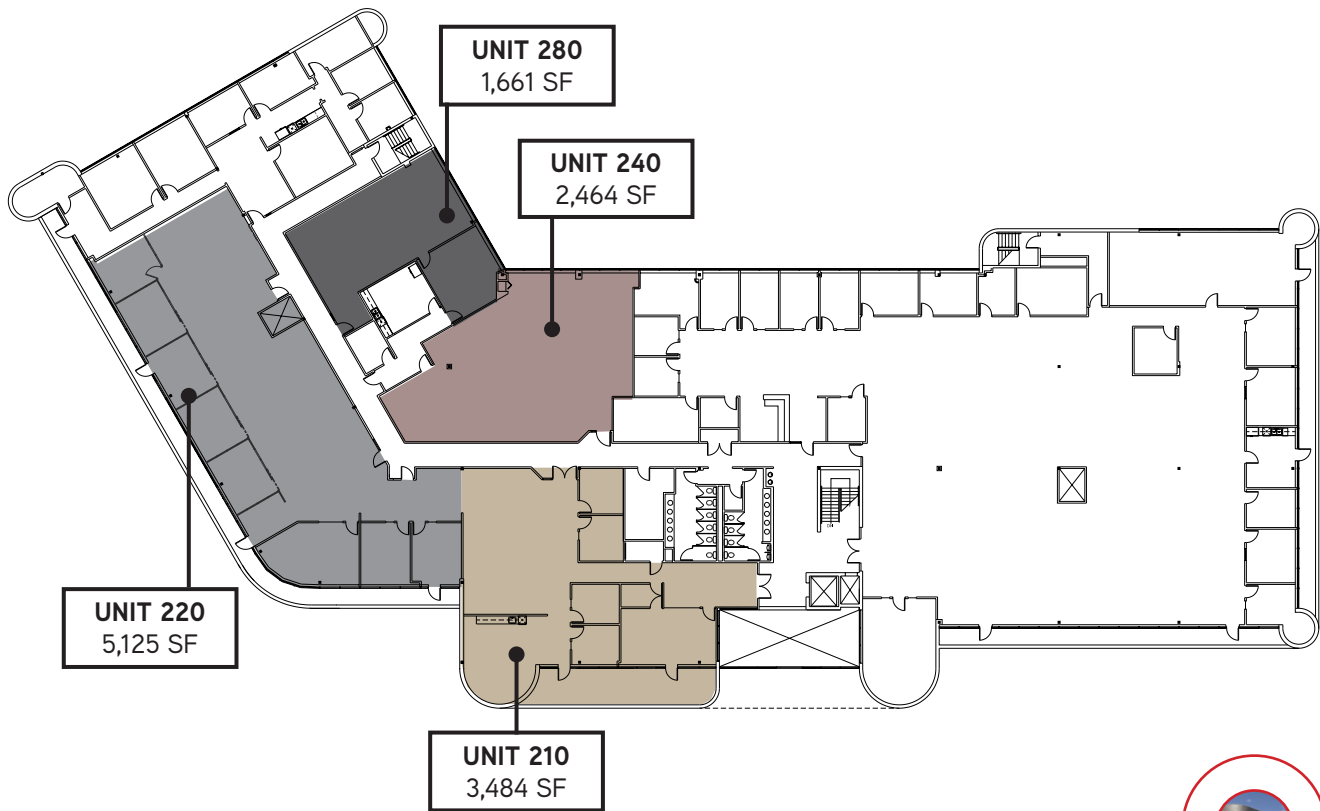
JEREMY REEVES
+1 303 283 4576
jeremy.reeves@colliers.com

T.J. SMITH, SIOR
+1 303 283 4576
tj.smith@colliers.com



12503 E. EUCLID DRIVE • SECOND FLOOR | CENTENNIAL, CO 80111

SPEC SUITES & NEW COMMON AREA AMENITIES COMING SOON



COLLIERS INTERNATIONAL DENVER

4643 S. Ulster Street | Suite 1000 | Denver, CO 80237

+1 303 745 5800 fax +1 303 745 5888 | www.colliers.com/denver

No warranty or representation is made as to the accuracy of the foregoing information.
Terms of sale or lease and availability are subject to change or withdrawal without notice.