



Office Opportunity

Corbin Chapman

Associate
+1 952 374 5811
corbin.chapman@colliers.com

Collin Barr

Associate
+1 952 897 7747
collin.barr@colliers.com

1600 Utica Avenue South, Suite 300
St. Louis Park, MN 55416
P: +1 952 897 7700
colliers.com

7525 Mitchell Road Eden Prairie, MN

Office Space for Sale Price Reduction \$150,000

- > Prime location for professional image
- > Spacious reception area that can accommodate additional office space or cubicles
- > Separate workroom with counter and shelving space
- > Atrium lobby and common area lunch room
- > Great windows providing lots of natural light
- > Controlled access security system
- > Back-up generator
- > Abundant parking

Copyright © 2021 Colliers International. Information herein has been obtained from sources deemed reliable, however its accuracy cannot be guaranteed. The user is required to conduct their own due diligence and verification.

For Sale

Property Highlights

Civic Address: 7525 Mitchell Road, Suite 101
Eden Prairie, MN

Currently Available: 1,996 sf

Year Built: 1974, renovated in 2006

Sale Price: \$150,000 (\$75.15 psf)

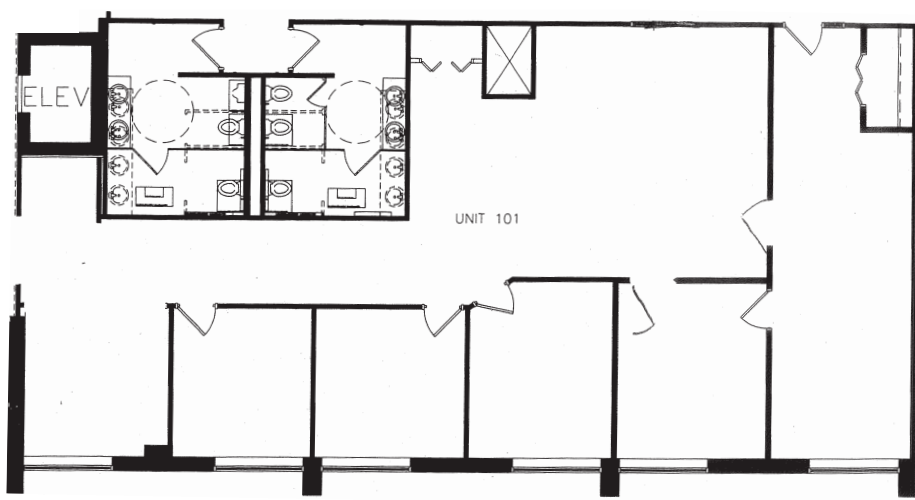
Annual Association Dues: \$17,274.86 (\$8.65 psf)

Taxes Payable 2018: \$6,684.96 (\$3.35 psf)

Features:

- Prime location for professional image
- Building includes conference room, breakroom, back up generator and storage
- Completely renovated in 2006
- Easy access to Highway 212 & I-494
- Close to many restaurants and shops
- Expected Co-Broker fee: 3%

Site Plan



Contact us:

Corbin Chapman

Associate
+1 952
corbin.chapman@colliers.com

Collin Barr

Associate
+1 952 897 7747
coll.barr@colliers.com

Colliers

1600 Utica Avenue South, Suite 300
St. Louis Park, MN 55416
P: +1 952 897 7700