

Over 19K Sq Ft of Flex Space: Lab, Office & Warehouse

1130-1150 James L Hart Pkwy, Ypsilanti, MI 48197



Listing ID: 30469677
Status: Active
Property Type: Industrial For Lease
Industrial Type: Flex Space, Industrial-Business Park
Contiguous Space: 19,728 SF
Total Available: 19,728 SF
Lease Rate: \$10 - 14 PSF (Annual)
Base Monthly Rent: \$16,440 - 23,016
Lease Type: Modified Gross
Loading: 2 Docks
Ceiling: 9 ft.
Drive-In Bays: 1 Bay



Overview/Comments

Well maintained multi-tenant building within the Washtenaw Business Park and just 1 mile from I-94. Easy drive to downtown Detroit, Ann Arbor and Ypsilanti. Plenty of parking & surrounded by additional industry and retail.

More Information Online

<http://www.cpix.net/listing/30469677>

QR Code

Scan this image with your mobile device:



General Information

Taxing Authority:	Ypsilanti Township	Zoning:	I1 LIGHT INDUSTRIAL
Tax ID/APN:	K -11-17-363-025	Gross Building Area:	56,033 SF
Industrial Type:	Flex Space, Industrial-Business Park, Light Industrial, Research & Development, Warehouse/ Distribution	Building/Unit Size (RSF):	56,033 SF
		Land Area:	4.31 SF

Available Space

Suite/Unit Number:	1130	Date Available:	08/07/2019
Space Available:	19,728 SF	Lease Rate:	\$10 - 14 PSF (Annual)
Minimum Divisible:	19,728 SF	Lease Type:	Modified Gross
Maximum Contiguous:	19,728 SF	Rent Escalators:	Percentage Lease
Space Subcategory 1:	Industrial-Business Park	Offices:	3
Space Subcategory 2:	Flex Space	Kitchen/Breakroom:	Yes
Space Description:	Flex space w/ separate office, lab/storage space w/ 2nd floor mezzanine for storage. 2 loading docks and 1 drive in bay.	Parking Spaces:	40
		Loading Docks:	2
Space Type:	Sublet	Loading Doors:	0
Sublease Expiration Date:	03/30/2029	Drive In Bays:	1
		Ceiling Height:	9

Area & Location

Property Located Between:	S Huron Street & Joe Hall Drive
Highway Access:	I-94
Airports:	Detroit Metro, Willow Run & Ann Arbor Municipal

Building Related

Tenancy:	Multiple Tenants	Parking Type:	Surface
Total Number of Buildings:	1	Total Parking Spaces:	100
Number of Stories:	1	Passenger Elevators:	0
Property Condition:	Good	Freight Elevators:	0
Year Built:	2001	Heat Type:	Natural Gas
Roof Type:	Flat	Heat Source:	Central
Construction/Siding:	Aluminum Siding, Block	Air Conditioning:	Package Unit
Parking Ratio:	0.6 (per 1000 SF)	Internet Access:	Cable, ISDN

Land Related

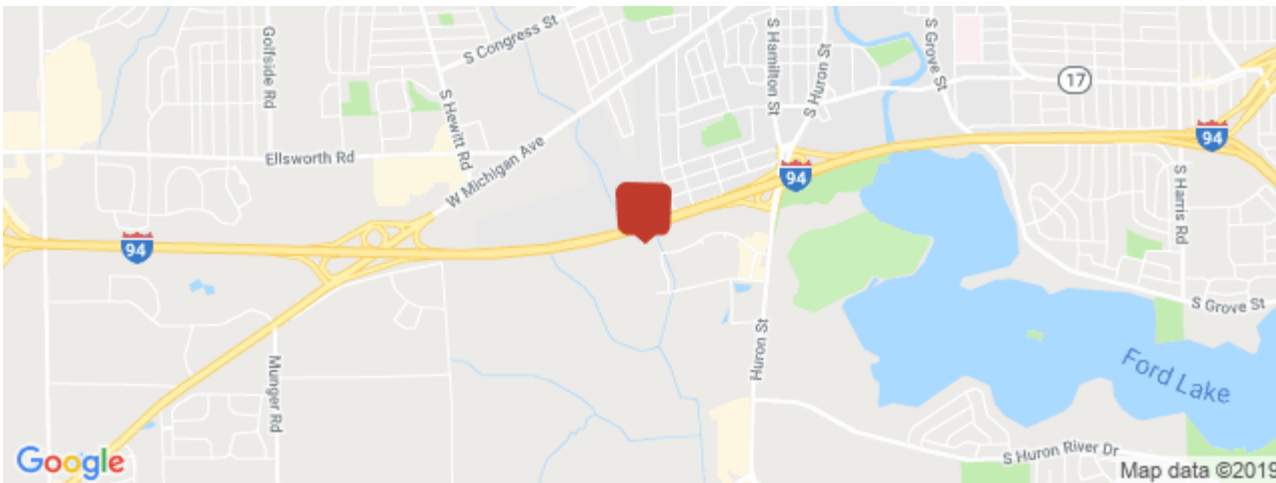
Lot Frontage:	443.69	Water Service:	Municipal
Lot Depth:	350.31	Sewer Type:	Municipal

Zoning Description The I-1 light industrial districts are designed so as to primarily accommodate wholesale activities, warehouses, and industrial operations whose external, physical effects are restricted to the area of the district and in no manner affect in a detrimental way any of the surrounding districts. The I-1 district is so structured as to permit, along with any specified uses, the manufacturing, compounding, processing, packaging, assembly and/or treatment of finished or semifinished products from previously prepared material.

Legal Description LOT 25 , WASHTENAW BUSINESS PARK, SECTION 17, T3S-R7E, YPSILANTI TWP, WASH CO, MI. PART OF FRENCH CLAIMS 680. CERTIFIED BUSINESS PARK, OCTOBER, 1988. CONT

Location

Address:	1130-1150 James L Hart Pkwy, Ypsilanti, MI 48197	MSA:	Ann Arbor
County:	Washtenaw	Submarket:	Washtenaw E of 23



Property Images



IMG_2714



image009



IMG_2713



image010



image007



image011



image013

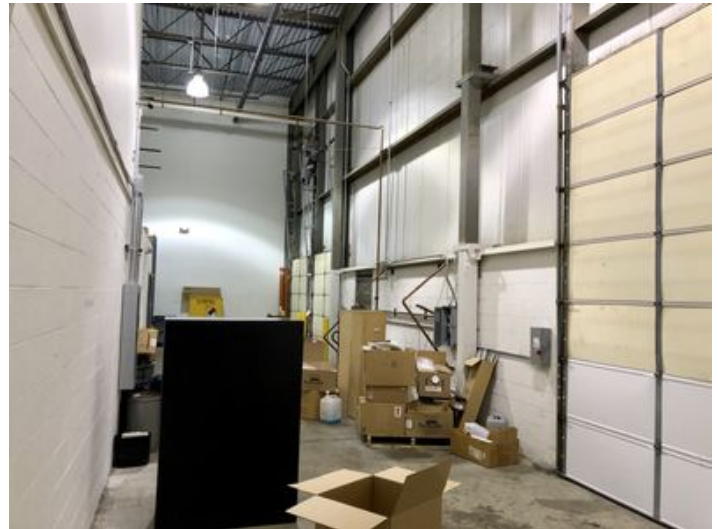


image017



image014



IMG_2699



image015



IMG_2701



IMG_2709



IMG_2707



IMG_2712



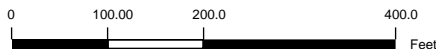
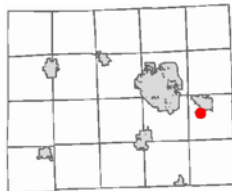
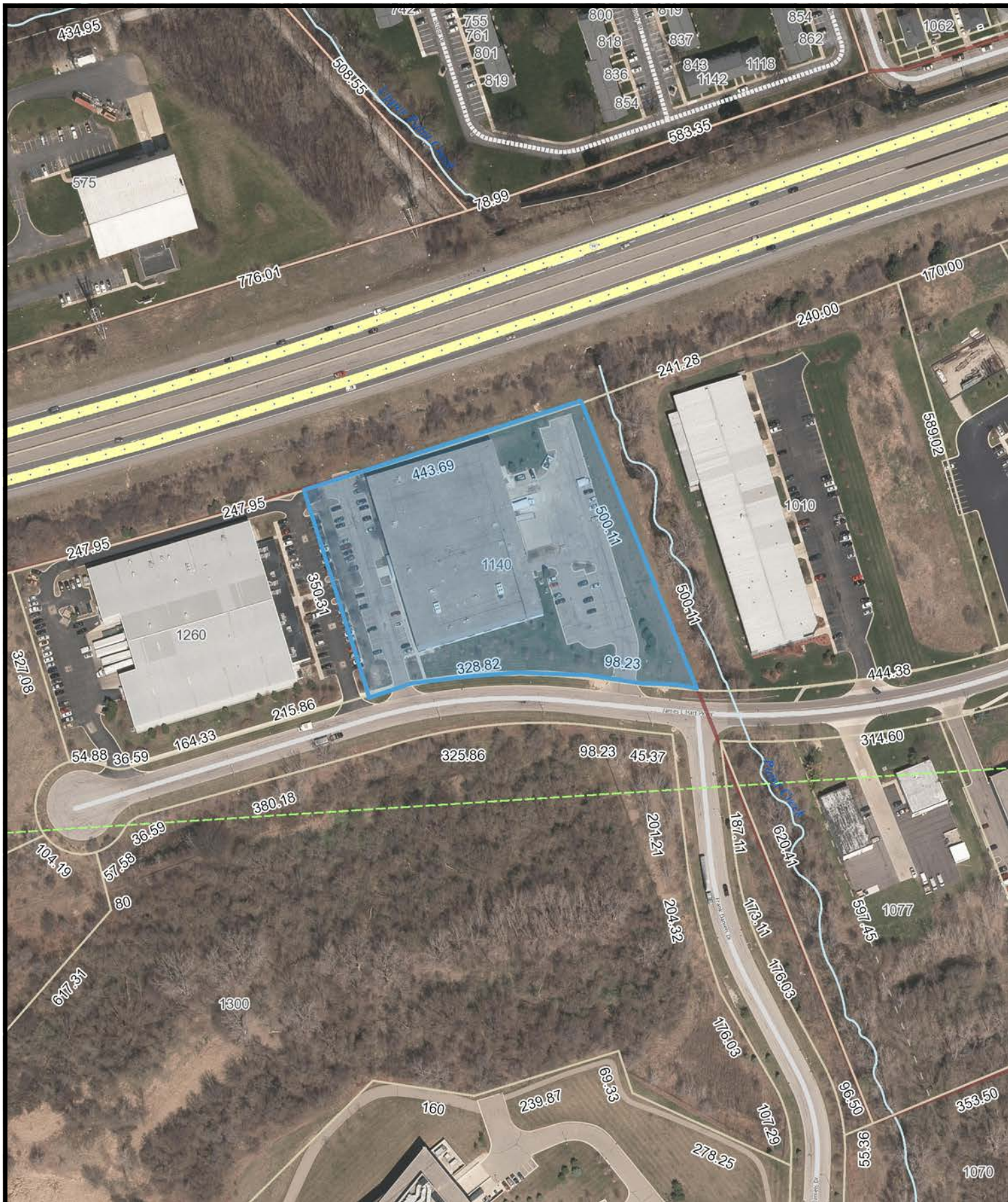
IMG_2693

Property Contacts



James H. Chaconas

Colliers International
734-994-3100 [0]
jim.chaconas@colliers.com



1: 2,400

8/7/2019

THIS MAP REPRESENTS PARCELS AT THE TIME OF PRINTING. THE OFFICIAL PARCEL TAX MAPS ARE MAINTAINED SOLELY BY THE WASHTENAW COUNTY EQUALIZATION DEPARTMENT AND CAN BE OBTAINED BY CONTACTING THAT OFFICE AT 734-222-6662.



NOTE: Parcels may not be to scale.

The information contained in this cadastral map is used to locate, identify and inventory parcels of land in Washtenaw County for appraisal and taxing purposes only and is not to be construed as a "survey description". The information is provided with the understanding that the conclusions drawn from such information are solely the responsibility of the user. Any assumption of legal status of this data is hereby disclaimed.